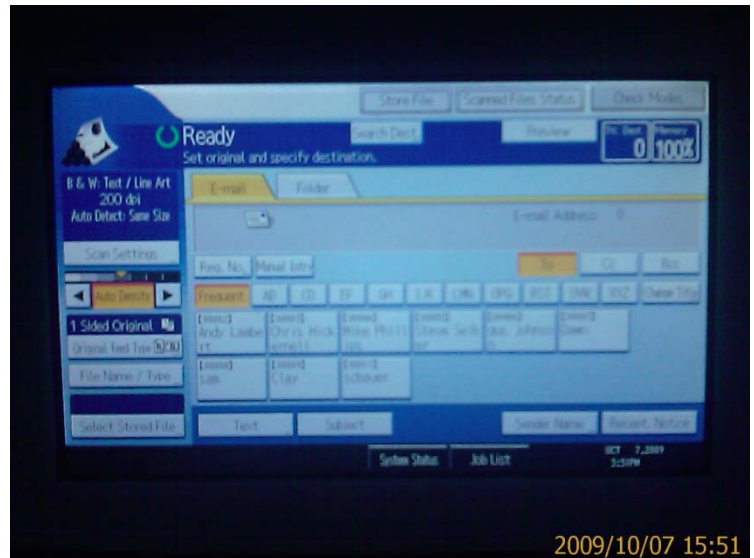


## Scanner option settings: (Original Feed Type)

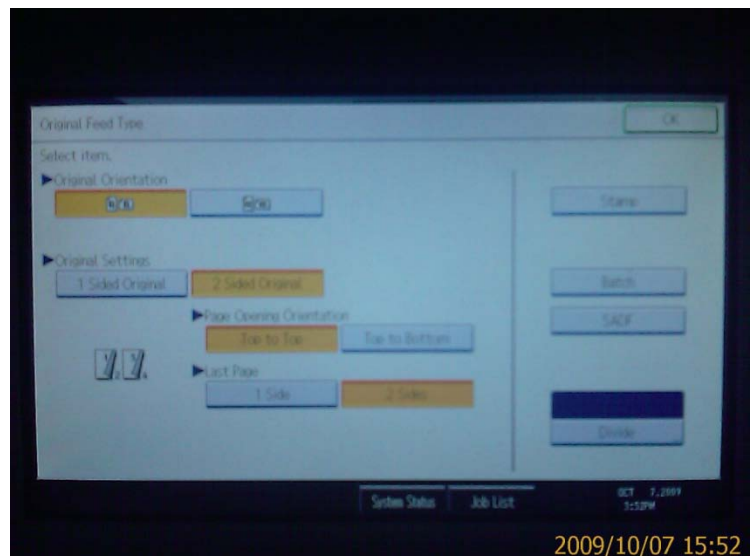
The following options are available under the “Original Feed Type” virtual button under the “Scanner” display panel. Please note that the default settings are: Orientation of how sheets are laid in paper feed tray vs. how they look when made into a .pdf file that is e-mailed to you - under Original Orientation. The other is under the “Original Settings” which offers you the ability to select double sided when you have double-sided pages you are going to scan.



2009/10/07 15:51

### Sheet Orientation and 1 sided or 2 sided scan sheets and:

There is also an option to specify if the last page is a “single sided page” or a “double sided page”. The main difference is when the .pdf file is created by the Ricoh scanner and e-mailed to you. If you leave it as “Last Page – 2 sided” but your last page only has text on the 1 side then your .pdf will have one last page that is blank. If you select “last page: 1 sided” then you won’t get that blank page.



2009/10/07 15:52