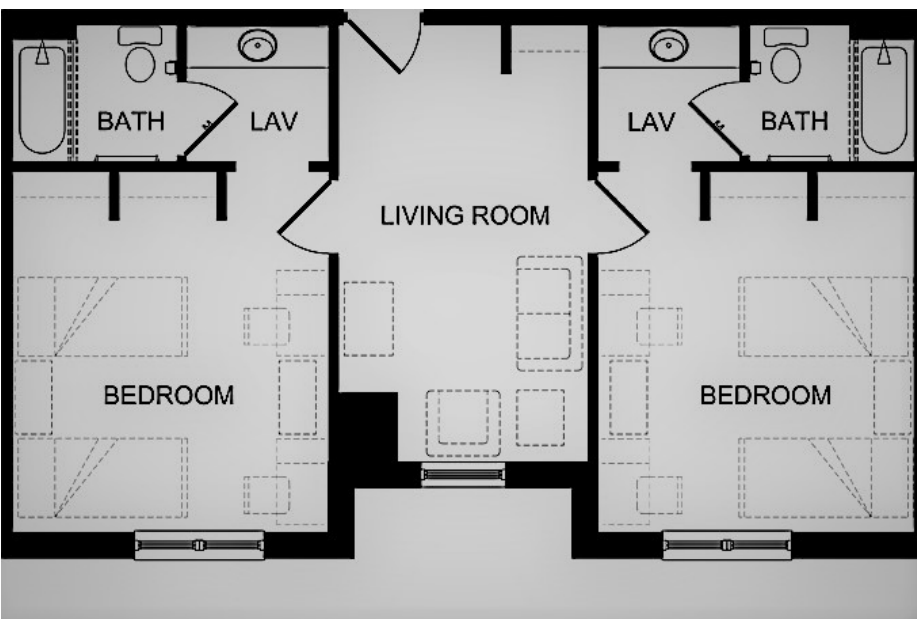


Housing Room Style Options at Clarion Campus



CLAR 2 Double Bedroom Suite (2 Bath)

[Former Name: 4 Person Suite/Quad Suite]

Located in Campus View and Valley View Suites

- 2 Bedrooms - 2 students per room
- A dresser, closet, desk, and chair provided for each student
- 2 Twin size beds per bedroom
- 2 bathrooms - 1 in each bedroom
- Shared living room with a couch, chair, and end table.
- Central air and heat for entire suite (controls in living room)
- Wi-Fi, Cable, phone hookups, Ethernet hookups available in each room

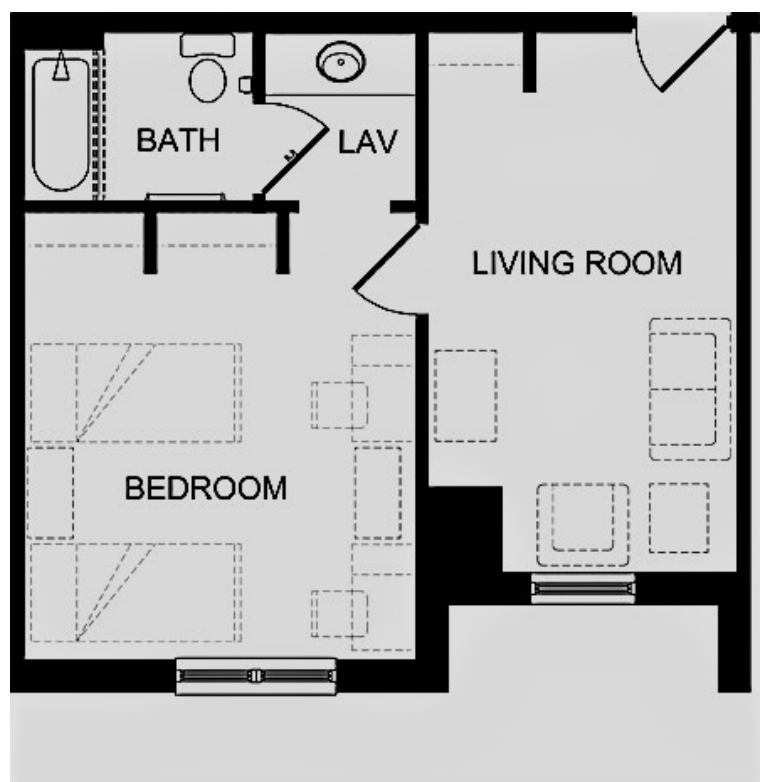
Hilltop Suites (Campus View and Valley View)

CLAR 2 Person Suite (1 Bath)

[Former Name: 2 Person Suite/Double Suite]

Located in Campus View and Valley View Suites

- 1 Bedroom - 2 students in room
- A dresser, closet, desk, and chair provided for each student
- 2 Twin size beds in bedroom
- 1 bathrooms
- Shared living room with a couch, chair, and end table.
- Central air and heat for entire suite (controls in living room)
- Wi-Fi, Cable, phone hookups, Ethernet hookups available in each room





CLAR 2 Person Semi-Suite* (1 Bath)

[Former Name: MS Shared Double Semi-Suite]

Located in Suites on Main North and South

- 1 Bedroom - 2 students per room
- 2 two drawer dressers, closet, desk, and chair are provided for each student
- 2 Twin size beds per bedroom
- 1 bathroom
- Central air and heat for entire suite (controls in bedroom area)
- Wi-Fi, Cable, phone hookups, Ethernet hookups available

CLAR Single Semi-Suite* (1 Bath)

[Former Name: MS Single Semi-Suite]

Located in Suites on Main North and South

- 1 Bedroom - 1 student per room
- 2 two drawer dressers, closet, desk, and chair are provided for each student
- 1 Twin size bed per bedroom
- 1 bathroom
- Central air and heat for entire suite (controls in bedroom area)
- Wi-Fi, Cable, phone hookups, Ethernet hookups available

Single Semi-Suites are modified 2 person Semi-Suite rooms. The picture to the left is what the room will look like. One bed has been removed. All other furniture is supplied as pictured.

Main Street Suites (North and South)

CLAR 2 Single Bedrooms Semi-Suite* (1 Bath)

[Former Name: MS Private Double Semi-Suite]

Located in MS Shared Double Semi-Suite

- 2 Bedrooms - 1 student per room
- 2 two drawer dressers, closet, desk, and chair are provided for each student
- 1 Twin size bed per bedroom
- 1 bathrooms
- Shared living space with dining table and 2 chairs.
- Central air and heat for entire suite (controls in shared living space)
- Wi-Fi, Cable, phone hookups, Ethernet hookups available



**semi-suites do not have a full living room.*



Four-Bed, Four-Bath



Two-Bed, Two-Bath

Reinhard Village Apartments (Only for Returning Students)



Four-Bed, Two-Bath Flat

All apartments include:

- 1 Full size bed in each bedroom
- Shower stall in 4 Bedroom 2 Bath Flat, 4 Bedroom 2 Bath Loft, and 2 Bedroom 2 Bath. The 4 Bedroom 4 Bath has a tub and shower. You will need a shower curtain for all styles.
- Dresser, desk, and closet in bedroom
- Washer and dryer
- Central heat and AC
- Wi-Fi
- Cable jacks
- Couch, table, and chair in living room
- Dining room table and chairs
- Microwave, refrigerator, stove, dishwasher, and garbage disposal in kitchen



Four-Bed, Two-Bath Loft



Housing Communities at Clarion

MAIN STREET SUITES

HILLTOP SUITES

REINHARD VILLAGES

LOCATION

On Campus, [Map](#)

On Campus, [Map](#)

Near Campus, [Map](#)

Suites on Main North

Campus View Suites

Hemlock Knoll (HK)

Suites on Main South

Valley View Suites

Whitetail Overlook (WT)

SUITE STYLES

Shared Semi Suite, [Layout](#)

2-person Suite, [Layout](#)

Firefly Meadow Farm (FF)

Private Semi Suite, [Layout](#)

4-person Suite, [Layout](#)

Laurel Glen (LG)

Grouse Field Lane (GF)

Brooke Trout Trace (BT)

2x2 Units

4x4 Units

4x2 Loft Units

4x2 Flat Units

REINHARD VILLAGES APARTMENT TYPES [Layout](#)

Village 1 Hemlock Knoll 4x4; 4x2 Loft, 4x2 Flat

Village 2 Whitetail Overlook 2x2; 4x4; 4x2 Flat;

Village 3 Firefly Meadow Farm 2x2; 4x4; 4x2 Flat; 4x2 Loft

Village 4 Laurel Glen 2x2; 4x4; 4x2 Flat; 4x4 Loft

Village 5 Grouse Field Lane 4x4; 4x2 Flat;

Village 6 Brooke Trout Trace 4x4; 4x2 Flat; 4x2 Loft

Note: Loft rooms-bedrooms A & D are on the bottom floor. Bedrooms B & C are on the top floor.