



SDP-950DXA/STA Quick Start Guide

BASIC OPERATIONS

The Samsung SDP-950DXA/STA provides control of the basic operations on the front panel of the Digital Presenter. Please note that you can also access these features via the Remote Control or the PS/2 Mouse by right-clicking on the mouse button to access the menu. Advanced features are found on both the remote and menu commands via the mouse.



SDP-950DXA



Turn on the main power switch of the document camera. After the boot-up screen, the presenter will perform an automatic white balance or "Color Adjustment."

Tip: Make sure there is no subject matter on the display surface to affect white balance. Printed text on white paper is OK.

▶ ROTATE (DXA Only)

Use the **ROTATE** button to electronically "flip" your portrait documents for sharper results and better display. Press the **ROTATE** button once to rotate the document in 90°, 180°, 270°, 0° increments.

▶ NEGA/POSI (STA Only)

Press the **NEGA/POSI** conversion button. Each time you press the button, **Nega** or **Posi** appears alternately on the screen.

▶ AF

Pressing the **AF** button will activate an auto focus adjustment at any time. Manual focus is available on the remote or menu via the mouse.

Tip: Use the mouse and the built-in menu command for extremely accurate manual focus control...especially good for 3-dimensional subjects when at maximum zoom.

▶ IRIS

The **IRIS** buttons (brightness control) are used to lighten **+** or darken **-** the overall image for the desired result.

▶ INT/EXT

Use this to switch between internal or external images.

▶ TXT/IMG

Press the **TXT/IMG** button to control the sharpness of the output image.

TXT : For a material with mostly words.
IMG : For a material with mostly image.

▶ ZOOM

Press the **ZOOM** **+** or **ZOOM** **-** settings to reduce or enlarge the image size.

Tip: Make sure you're not moving the subject during auto focus. If the subject is blurry, press the **AF** button to re-focus.

Note: If you save an image when in the Digital Zoom mode, the SDP-950DXA/STA will only save the maximum optical zoom image (12x) to maintain overall image quality.

▶ FREEZE

Use the **FREEZE** button to "hold" any image on the screen while you change your subject or to freeze a subject in any position. To release the **FREEZE** mode, press the **FREEZE** button again or **EXIT** button on the remote control.

Tip: The **FREEZE** button is used to freeze a live image or divided image in order to activate the **Draw** menu command for annotation.

▶ LAMP

Select a proper lighting source with the **LAMP** button of the presenter. Pressing the **LAMP** button turns the upper lamp on or off.

Tip : Use the upper lamps for documents and other subjects. Use the built-in Lightbox to illuminate overheads, X-rays, and slides.

▶ AWC

For automatic color adjustment, press the **AWC** button.

Tip: For best results, only activate **AWC** with a white surface under the lens.





SDP-950DXA/STA Quick Start Guide

ADVANCED FEATURES

This section will cover additional features found on the Samsung SDP-950DXA/STA including Image Save & Recall, 3X3 Mode, Image Divide, Annotation, and Preset functions. These advanced features are available from the Remote Control and the Menu commands via the Mouse.



Image Save (DXA only)

Up to 8 full-size images can be saved to internal memory of the DXA Series Samsung Digital Presenter. This feature allows the presenter to quickly save images for review at the end of a class or meeting or for download to a personal computer. These controls are located at the base of the remote. Press the **SAVE** button and select a number between 1 and 8 on the remote as the storage position. If you wait too long to select a number, the Screen display will disappear. If this occurs, start the process again by selecting the **SAVE** button. Images can be "over-written" by the same process.

- Tip:**
- Images will be lost if the unit is turned off. If you want to save any of the stored images, download them via the USB cable and software to your Windows or Macintosh computer.
 - Use this feature to create "bullet points" during your presentation

Image Recall & Scan (DXA only)

To view any of the stored images, select the **RECALL** button at the bottom of the Remote control, then select a number from 1 to 8 to instantly view that image.

Image Divide (DXA only)

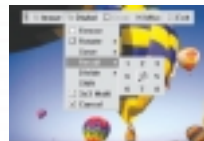
Any stored image can be divided on screen with a live image...a great tool for comparative analysis of any subject matter. First make sure that you have stored an image that you would like to divide. Next, press the **DIVIDE** button and select the image to divide by entering the number where it is located. You'll see the image appear on the left side of your display. The right side of the display is live, allowing you to adjust all the settings to your liking.

Image Shift (DXA only)

Once an image has been divided, you may need to "shift" that image to show the portion you would like to view. Press the **SHIFT** button to cycle the image in 1/3 increments to your desired location.

Annotation

By using the mouse and the pull down menu, any image may be annotated. To access the **Draw** portion of the menu, either "Freeze" a live image, recall a stored image, or "Freeze" a divided image. This can be done by pressing the **FREEZE** button on the front panel, remote or menu. Click on the **Draw** menu to open the annotation tool box shown here. Select the desired line width, tool, color...either a straight line, box, freehand, or eraser, and up to 6 colors. Left click the mouse while drawing to use the top color. Right click to use the bottom color. You can easily change the color of your pen by placing the cursor over the color and either clicking on the left or right mouse button.



Tip: To quickly exit from the **Draw** screen, press **EXIT** on the remote control to return to a live display.

Note: Annotated images cannot be saved to a personal computer.

3x3 Mode (DXA only)

Press the **3x3** button on the remote. A display will appear showing all 8 images at once, allowing you to see where the images are stored. Press the number on the Remote corresponding to that image to view a full size version.

- Tip:**
- You can also use the mouse to click on an image to view it as well. This also activates the menu feature.
 - Clicking on the center pane in the 3x3 Mode will allow you to jump to a live image.

Presets

Up to 4 User-defined presets can be stored allowing the presenter to quickly jump to a specific pre-determined setting such as a 35mm slide or negative. First, adjust all your settings for the desired result (zoom, lamps, focus, etc.). Next select **PRESET / SAVE** on the remote or menu and enter a number from 1 - 4 to save. To recall the preset, select **PRESET / ACTIVE** on either the remote or menu and enter the appropriate number for your setting.

Note: All Preset functions including the Aperture settings for Image and Text will be saved even if the unit is powered down. However, any stored image will be lost if the unit is turned off. If you want to save any image that has been stored in the Digital Presenter, please be sure to download them to a personal computer prior to shutting down.