

CLARION UNIVERSITY WIRELESS SETUP GUIDE

Microsoft Windows Vista

These instructions are written for computers running Microsoft Windows Vista in which Windows controls your wireless network card. If you are using another Windows Operating System or your wireless card is managed by another company's software, you may use these instructions as a guide. These instructions will guide you through the necessary configuration settings to allow your laptop to connect to the “cu-wifi-secure” (Clarion campus); “ven-wifi-secure” (Venango campus); or “resnet-wifi-secure” (Residence Halls) network. The network is designed for use by Clarion University staff, faculty, and students that are using their personal laptops to access the University's wireless network. You should only have to perform the steps in this guide one time per laptop.

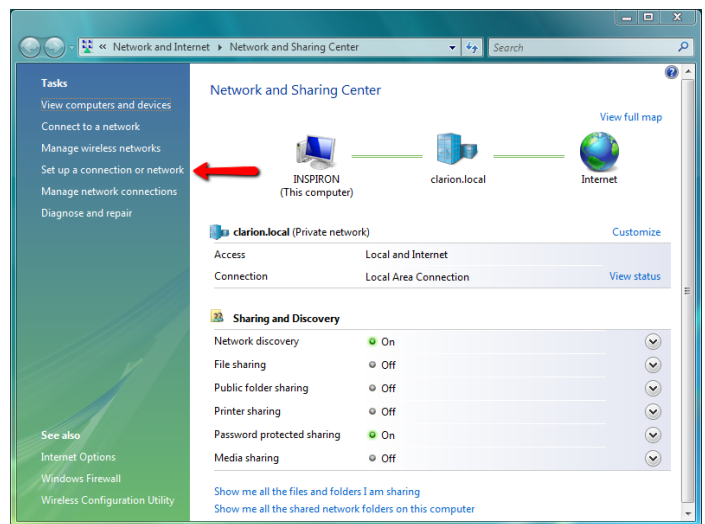
You will likely need administrative rights to your computer to complete this configuration.

If you encounter any issues with accessing the Clarion University wireless network, then please contact the Computing Services Help Desk at 814-393-2640 or helpdesk@clarion.edu.

Please make sure that your wireless network card is turned on and that it is not disabled by the power management utility on your laptop. Many laptops have a physical switch on the side or front to turn the wireless network card on and off. If so, check and make sure that this switch is turned on. Most laptops also have a led located somewhere below the screen. If it is lit up, the card is on. Please refer to your computer's manual for the correct procedure to power on its wireless card.

1. In the Start Search bar type “Network and Sharing Center” and press enter.

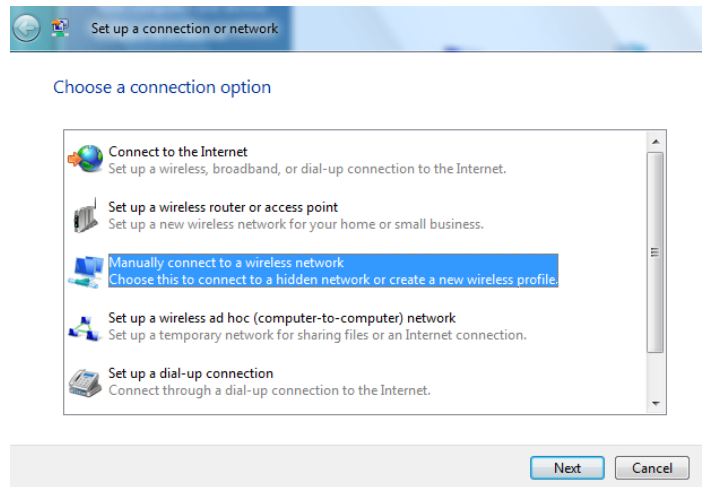
2. Click “Set up a connection or network” found on the left-hand menu.



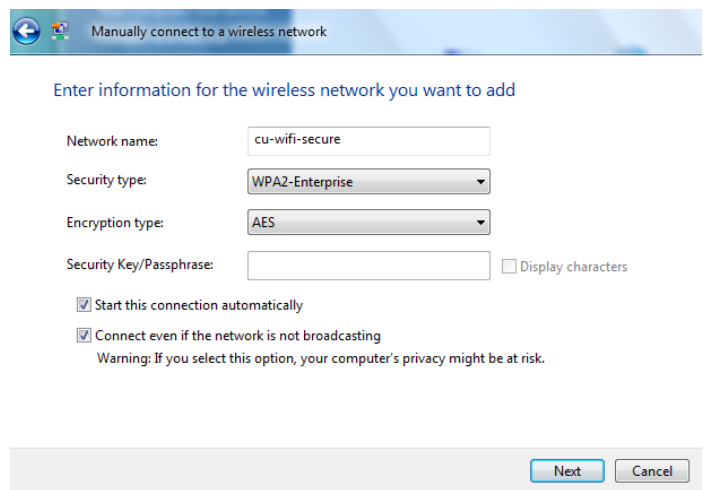
CLARION UNIVERSITY WIRELESS SETUP GUIDE

Microsoft Windows Vista

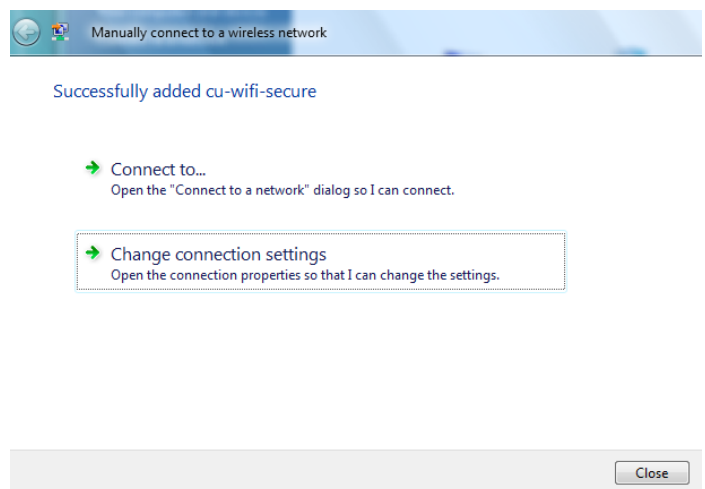
3. In the “Set up a connection or network” window select “Manually connect to a wireless network” and click “Next.”



4. In the “Manually connect to a wireless network” window enter the following information:
- “Network name” field enter one of the following:
 - “cu-wifi-secure” (Clarion campus)
 - “ven-wifi-secure” (Venango campus)
 - “resnet-wifi-secure” (Residence Halls)
 - “Security type” field select “WPA2-Enterprise”
 - “Encryption type” field select “AES”
 - The “Security Key/Passphrase” field is blank.
 - Check the box in front of “Start this connection automatically”.
 - Check the “Connect even if the network is not broadcasting” check box.
 - Click “Next.”



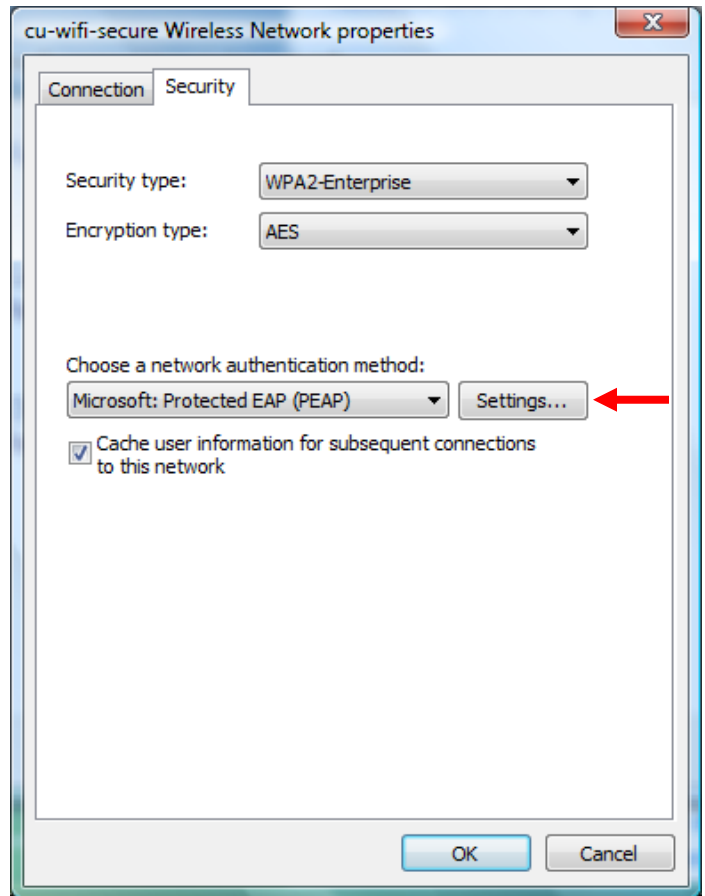
5. Click “Change connection settings.”



CLARION UNIVERSITY WIRELESS SETUP GUIDE

Microsoft Windows Vista

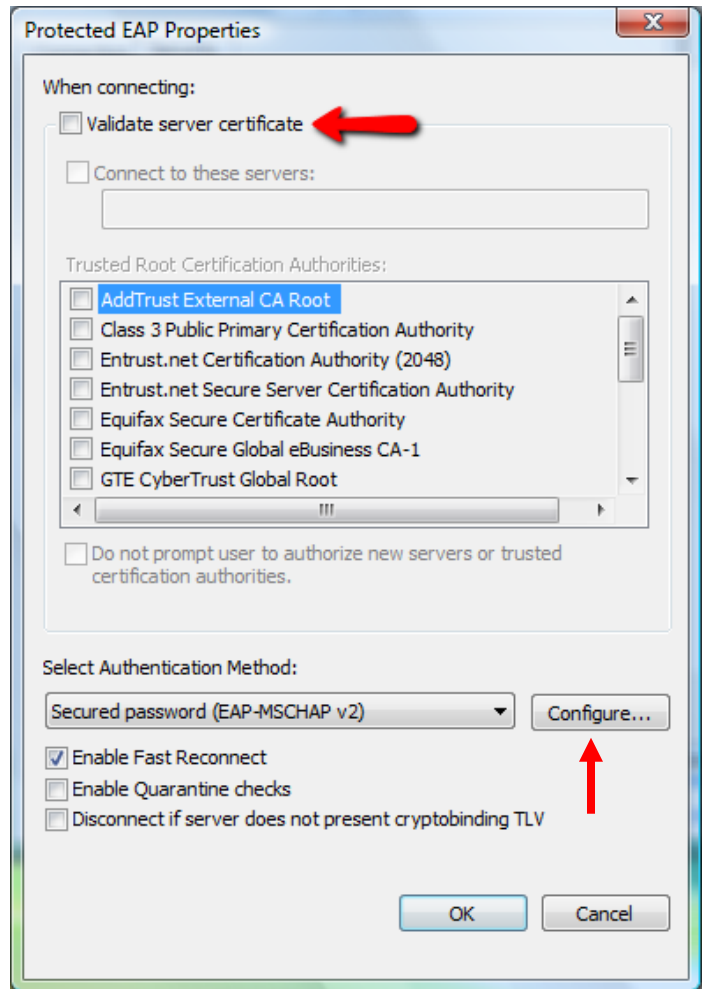
6. On the Security tab click "Settings..."



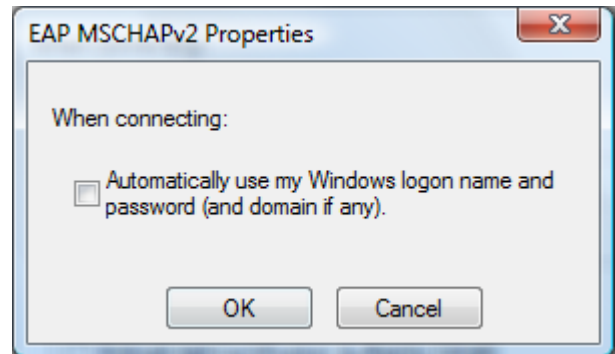
CLARION UNIVERSITY WIRELESS SETUP GUIDE

Microsoft Windows Vista

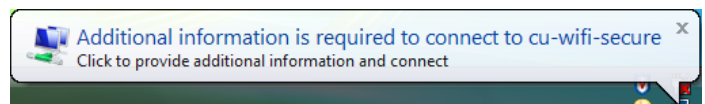
7. Un-check "Validate server certificate" box.
8. Click "Configure..." next to "Select Authentication Method" field.



9. Un-check the "Automatically use my Windows logon name and password (and domain if any)" check box.
10. Click OK.
11. Click OK in the "Protected EAP Properties" window.
12. Click OK in the "Wireless Network properties" window.
13. Click "Connect to..." in the "Manually connect to a wireless network" window.



14. Click the pop-up balloon that appears in the bottom right-hand corner of the screen.



CLARION UNIVERSITY WIRELESS SETUP GUIDE

Microsoft Windows Vista

15. Enter your login information in the “Enter Credentials” window.
 - a. “User name” field enter your iClarion username (do not include @clarion.edu in your username).
 - b. “Password” field enter your iClarion password.
 - c. “Logon domain” field enter “CLARION”
 - d. Click OK.
16. Your wireless connection is now complete.

