

Living at Clarion has never been better.

Students can now choose from three distinctly different types of housing communities.



## RESIDENCY REQUIREMENT

Students who meet the following criteria are required to live in university-affiliated housing:

- First-year students who are enrolled full time.
- Transfer students (who have earned less than 24 credits at a previous institution) who are enrolled full time.
- First-year and transfer students who have earned less than 30 credits at the completion of their first year of residence.
- Students in university affiliated housing who are not in good academic standing after their first year of residence.

Exemptions:

- First-time-in-college students or transfers living with a parent/guardian at their permanent address within a 30-mile radius of Clarion.
- Married students
- Students over the age of 21
- Part-time students
- Single parents
- Veterans who have completed two years of active service.



### Residence Life Services

Clarion University of Pennsylvania  
236 Egbert Hall  
840 Wood Street  
Clarion, PA 16214  
814-393-2352  
[www.clarion.edu/reslife](http://www.clarion.edu/reslife)

### Reinhard Villages

159 University Boulevard  
Clarion, PA 16214  
814-226-4740  
[clarion.myownapartment.com](http://clarion.myownapartment.com)

### Residence Life Mission Statement:

*“To collaborate with students, faculty and staff in providing services that support students’ academic, social and personal development by fostering diverse, engaging and responsible communities.”*

Updated January 2011



A member of the Pennsylvania  
State System of Higher Education

It is the policy of Clarion University of Pennsylvania that there shall be equal opportunity in all of its educational programs, services, and benefits, and there shall be no discrimination with regard to a student's or prospective student's race, color, religion, sex, national origin, disability, age, sexual orientation/affection, veteran status or other classifications that are protected under local, state, and federal laws. Direct equal opportunity inquiries to Assistant to the President for Social Equity, Clarion University of Pennsylvania, 207 Carrier Administration Building, Clarion, PA 16214-1232, 814-393-2109.

# LIVING at CLARION

## Student Housing Options



# THE HALLS

Residence halls range from three to seven floors and house from 108 to more than 400 students each.

A majority of rooms are double occupancy. There are a limited number of single rooms available. All have high-speed Internet, cable, and unlimited local telephone service.

Close to activities, the library, and dining facilities, each hall has a recreation area, television lounge, study rooms, microwave, laundry, and common kitchen.

Students have a choice of residence halls that accommodate all-women, all-men, or co-educational by floor.



The Suites have been awarded Silver LEED certification.



# THE SUITES

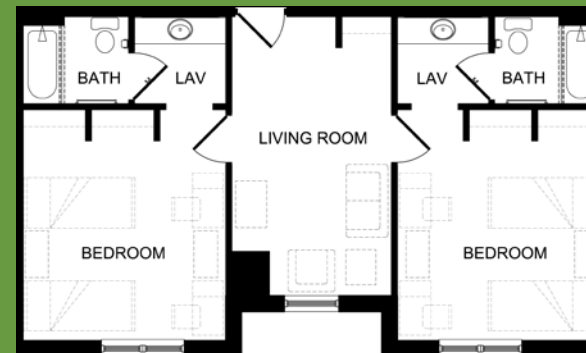
Two suite-style residence halls opened in January 2009. Two or four students share a common living space with a full bath for every two residents. Bedrooms each have two sets of beds, desks, dressers, and closets.

Living areas include a couch, coffee/end tables, and chairs with air conditioning, high-speed Internet, cable, and phone connections.

Each floor has a lounge and each building has a laundry room.



Standard two-person unit



Standard four-person unit



# THE VILLAGES

Reinhard Villages is a 176-unit, 656-bed, apartment-style housing complex in six theme villages.

Four apartment types, all with private bedrooms and some with private baths, are fully furnished with kitchen appliances, furniture, and a washer and dryer.

Cable, high-speed Internet, local phone, and an all-inclusive utility package are included in the apartment rate.

Residents can enjoy the Miller Community Center complete with a fitness center, and a computer lab. Recreational facilities include a heated pool, picnic area with grills, and basketball and volleyball courts.

Students can choose from two lease terms.