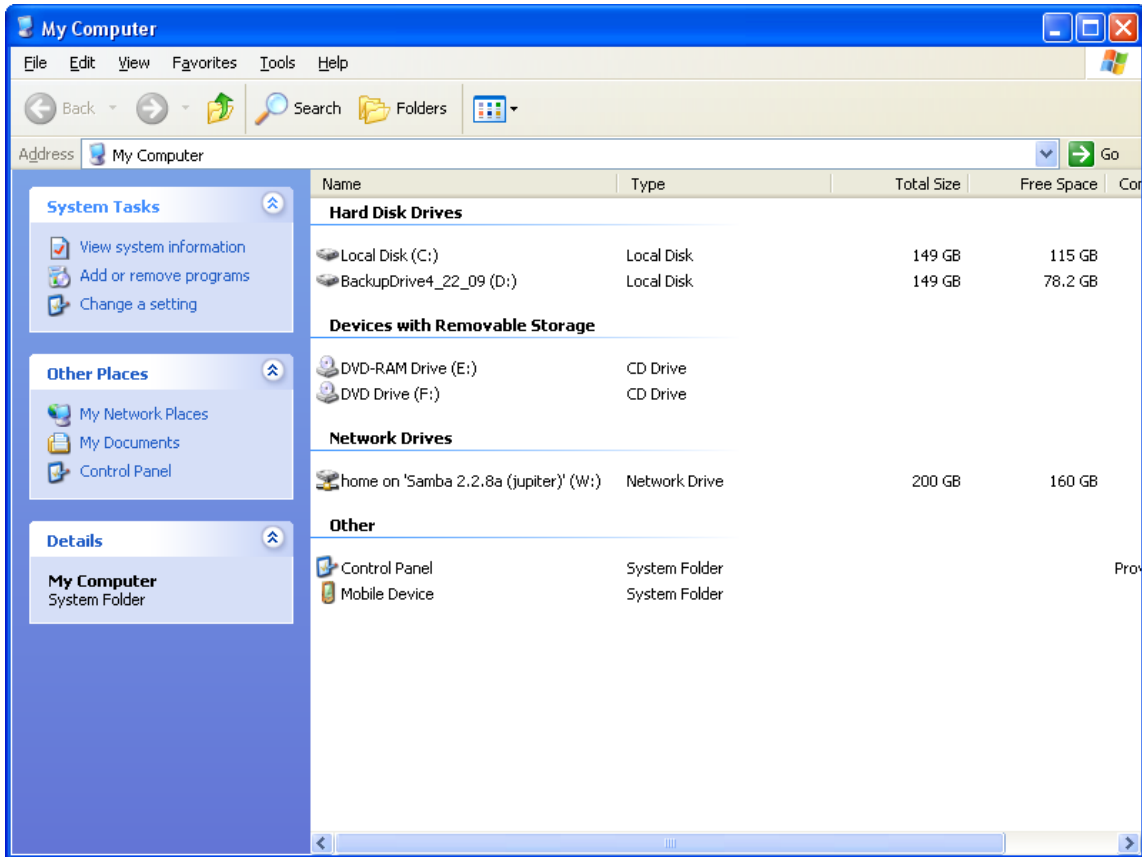


Using Computer labs or Smart Classroom systems on campus allows you an easy way to access your Jupiter space.

When you login to the computer using your Clarion username/password you will automatically have a drive (W:) mapped to your Windows computer under "My Computer". Just double-click the drive map (W:) to access your Jupiter space.



For **Mac users** a volume is automatically mounted to your desktop after successful login.



If your username and password are correct, you will be prompted for a volume selection. Make sure you specify "**home**". You will also have a shortcut on your desktop labeled "**HOME**". If you have a problem with accessing the Jupiter server, you may need to reset your password.

To **reset your password** go to [<https://mars.clarion.edu/password/>]. This process should synchronize your passwords to allow you to connect to the Jupiter server. If you still have problems, contact the help desk for assistance at 393-2640.