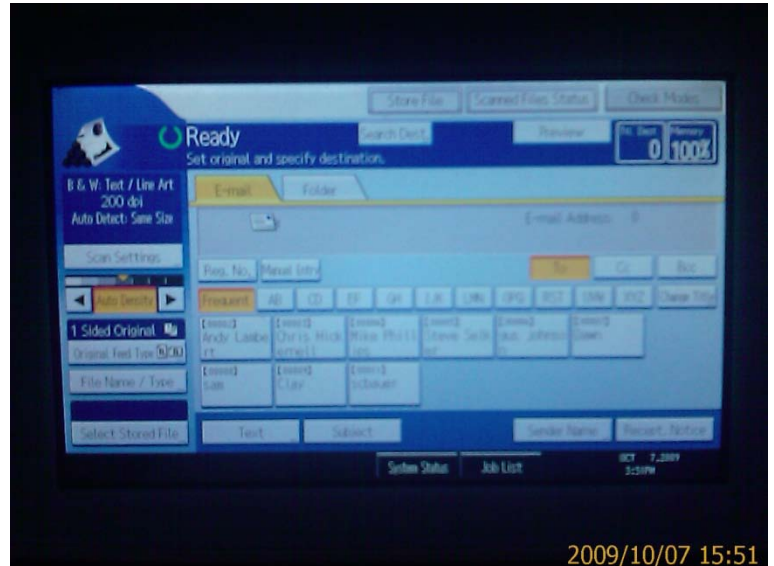


Scanner option settings: (Scan Settings)

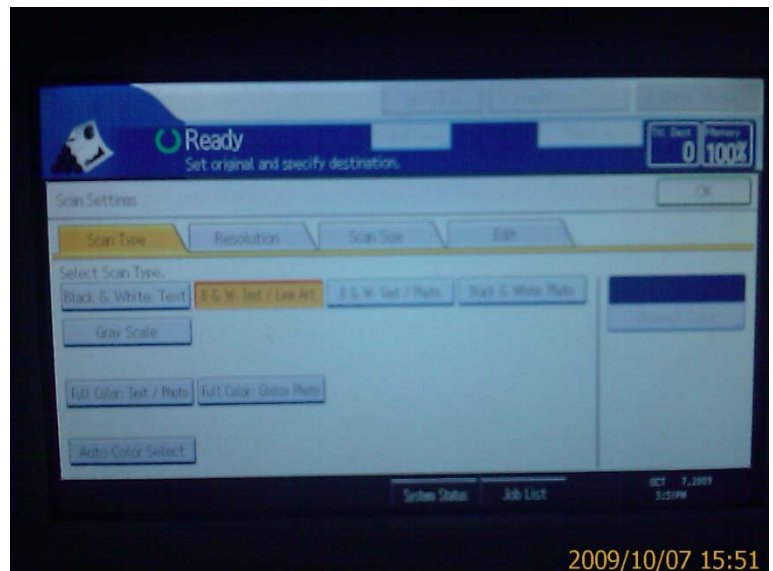
The following options are available under the “Scan Setting” virtual button under the “Scanner” display panel. Please note that the default settings are: “B&W Text/Line Art” for [Scan Type] and “200 dpi” for [Resolution] and these default settings should be returned after your done making your customized scans.



2009/10/07 15:51

Scan Type Tab:

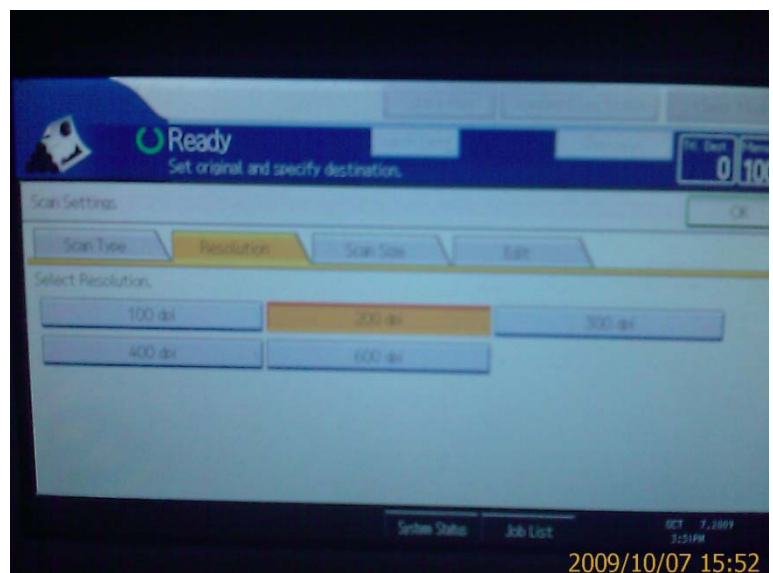
- “B&W Text/Line Art” – default
- “Full Color Text/Pictures” – if you want scanned .pdf to show in color.



2009/10/07 15:51

Resolution Tab:

Only needs to be changed to a higher dpi setting if you are having trouble reading test/image in your scanned .pdf file.



2009/10/07 15:52