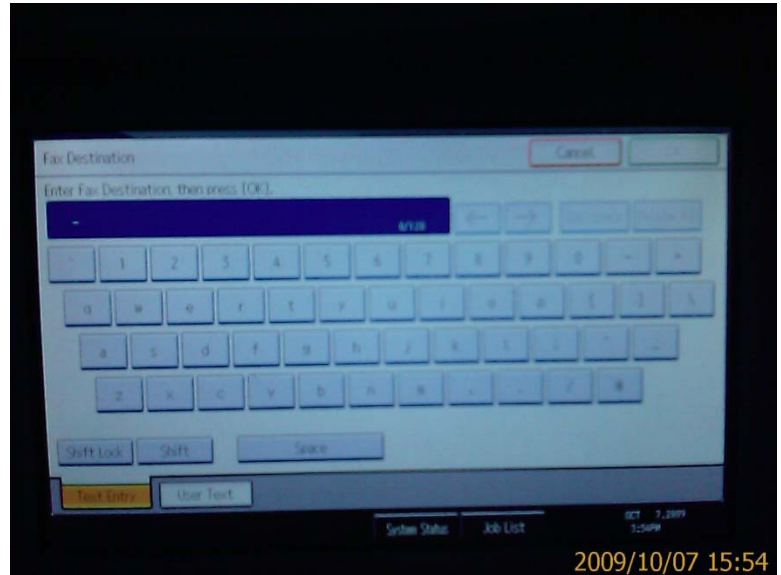


Create a one touch button on “scanner” display panel for frequently used scan to e-mails

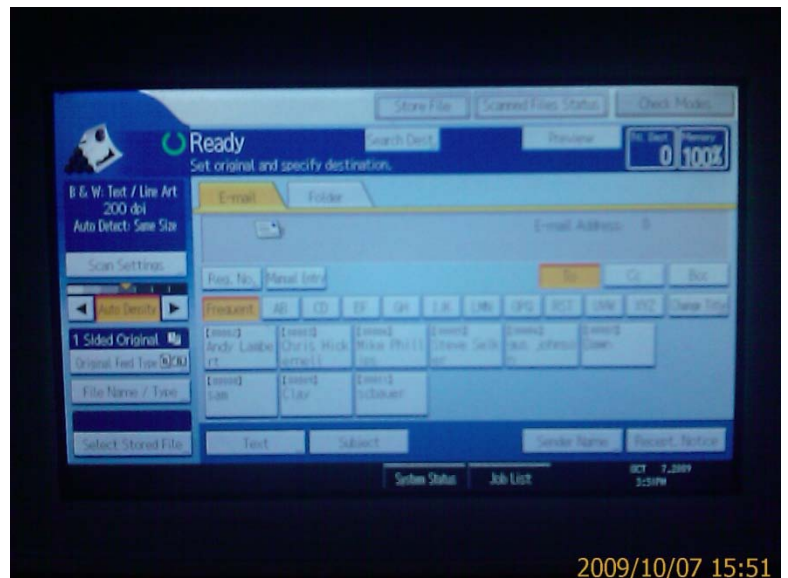
1. Press the virtual “**Prg Dest.**” button on display control panel
2. Press the virtual “**Change**” button on display control panel

3. Type in the e-mail address you would like to create a “one touch button” with (note: the @ symbol is located on bottom right of virtual keyboard)
4. Press [OK] button on top right of display panel
5. Press [OK] button again on top right of display panel



6. Type in a name for your new “one touch button” your trying to create via the virtual keyboard that will pop up again (note: this is the name that will be displayed on the virtual one touch button that you are creating)
7. Press [OK] button on top right of display panel
8. Press [OK] button again on top right of display panel

You should now see a new “one touch button” appear on the display panel in the space below the “Frequent” button.



**After you put your information (pages to scan) into the feeder tray or under glass you simply press this new “one touch button” and press the physical green [START] button (which should be light green) on right side of unit just below the number keys.

