



INSIDE

THE CLARION UNIVERSITY LIBRARIES



April 2, 2019

Volume 14 Number 25 ·

In This Issue

- What is *ABI/INFORM Complete*?
- What is *Business Source Complete*?
- Library Tip: Roving Reference & Research Help
- The S.W.A.T. Minion's Tip: How To Use Periods in Excel Dates
- Cranial Candy: Word Of The Week ... *nidus*
- Something To Think About

CU Libraries' Links:

[Inside The Clarion University Libraries](#)

[Read back issues of the Libraries' newsletter](#)

Library Home

[Your link to all of the Libraries' resources](#)

Online Catalog

We publish *INSIDE The CU Libraries* weekly, when classes are in session. Here we share information about our services and resources with the campus community. Current and back issues are available online through the NEWS link on the [Libraries' homepage](#).

What Is *ABI/INFORM Complete*?



[ABI / INFORM Complete](#) includes thousands of full-text journals, dissertations, conference proceedings, marketing and industry reports, company records, business case studies, and global trade news from 1971 to the current date. It is comprised of:

- **ABI / INFORM Global** – core scholarly content including thousands of full-text journals, dissertations, and collections of working papers, including the *Wall Street Journal*, *The Economist*, *Financial Times*, *Sloan Management Review*, and other major business publications.
- **ABI / INFORM Trade & Industry** – applied content including market research reports, journals, magazines and periodicals relevant to trade and industry.
- **ABI / INFORM Dateline** – a streamlined version, containing regional business news and wire feeds.

ABI / INFORM contains:

- 6,637 full-text journals, 2,240 of which are scholarly.
- 44 million company records from Experian.
- 40,000+ business-related dissertations.
- 450,000+ working papers and research reports from the National Bureau of Economic Research (NBER), Organisation for Economic Co-operations and Development (OECD), Research Papers in Economic (RePEc), INSEAD and others.
- Comprehensive, expert market information from Business Monitor International, Economist Intelligence Unit (EIU), Euromonitor, Dunn & Bradstreet, Oxford Analytica, and more.
- 10,000+ business cases and case studies.

This electronic information resource is available through the [Libraries Homepage](#). In the "Research" block, click on the [Databases A-Z link](#), then scroll down the [alphabetical list](#).

If you have questions or need assistance, stop by the Libraries or call Carlson Library at 393-2490 or Suhr Library at 393-1243. Clarion Online distance education students may call toll-free at 866-272-5612 (press 5 for Library). Chat and other online services are available at the [Ask a Librarian! / LibAnswers!](#) link on our Website.

[Search the Libraries' online catalog](#)

Databases A-Z

[Search the Libraries' extensive collection of electronic journals and e-books](#)

Contact Us

[Dr. Terry Latour](#)
Dean of Libraries

What is *Business Source Complete*?



Business Source Complete is said to be “the world’s definitive scholarly full-text business database.” It is an essential tool for business students, covering the disciplines of business, marketing, management, accounting, banking, finance, and more.

It contains more than:

- 3,800 full-text journals, including nearly 2,000 peer-reviewed journals
- 820 books and monographs
- 12,000 case studies
- 1.1 million company profiles (“Company View”)
- 1,200 country economic reports
- 7,800 industry reports
- 2,500 market research reports
- 4,000 SWOT analyses
- 40,000 author profiles
- Nearly 60 faculty seminar videos
- Nearly 10,000 executive and analyst interviews
- 32 working papers collections

This electronic information resource is available through the [Libraries](#) homepage. In the “Research” block, click on the Databases A-Z link, and then scroll down the alphabetical list.

If you have questions or need assistance, stop by the Libraries or call Carlson Library at 393-2490 or Suhr Library at 393-1243. Clarion Online distance education students may call toll-free at 866-272-5612, (press 5 for Library). Our Chat and other online services are available at the [Ask a Librarian! / LibAnswers!](#) link on our Website.

Library Tip: Roving Reference & Research Help



Does a tight schedule prevent you from visiting the library?

Do you need help finding information to complete an assignment?

Are you having trouble locating a scholarly journal article?

Do you want some one-on-one instruction about our online library resources?

Look for our *Roving Reference Librarians* in the following locations this semester:

Clarion Campus:

- STC Lobby (Level 1)
 - Tuesdays ... 10:30 am -11:30 am
- Suites on Main North (Lounge)
 - Wednesdays ... 3:00 pm – 4:00 pm
- Gemmell (Rotunda)
 - Thursdays ... 11:00 am -12:00 pm

Venango Campus:

- Montgomery (ARC)
 - Mondays ... 1:00 pm – 2:00 pm
- Rhoades (Lobby)
 - Tuesday ... 1:00 pm – 2:00 pm
- Montgomery (4th Floor)
 - Thursday ... 10:00 am – 11:00 am

The S.W.A.T. Minion's Tip: How To Use Periods In Excel Dates

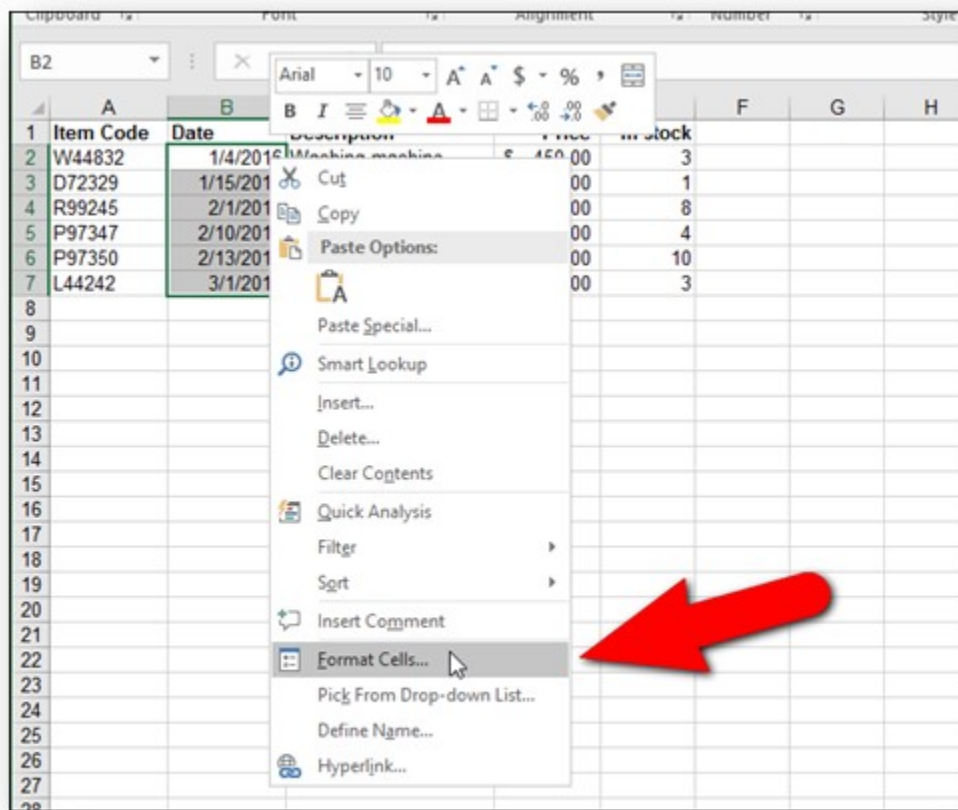


By default, short dates in Excel are formatted using slashes (3/19/2016). If you use many dates in your worksheets, it may be easier to focus on the numbers without all of those lines (3.19.2016).

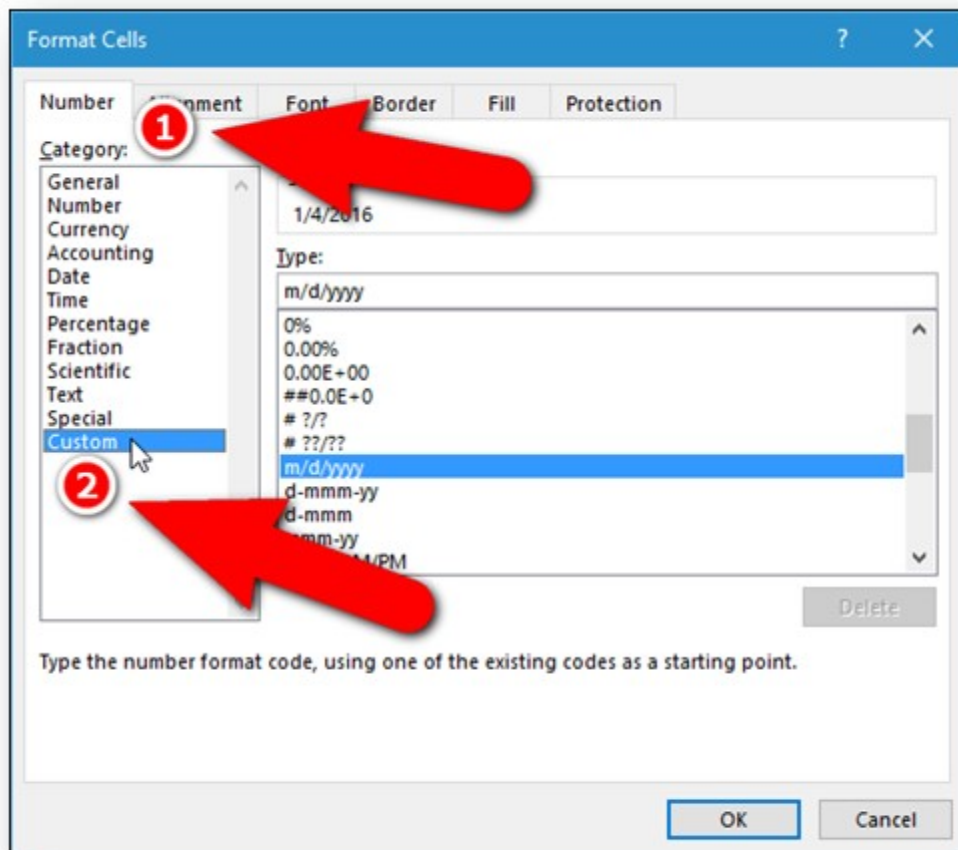
You can easily change the format. Here's how:

Item Code	Date	Description	Price	In stock
W44832	1/4/2016	Washing machine	\$ 450.00	3
D72329	1/15/2016	Dishwasher		
R99245	2/1/2016	Refrigerator		
P97347	2/10/2016	Plasma TV 47inch		
P97350	2/13/2016	Plasma TV 50inch		
L44242	3/1/2016	LCD TV 42inch		

1. Select the cells containing the dates you want to change.
2. Right-click on the selected cells
3. Select "Format Cells" from the popup menu.

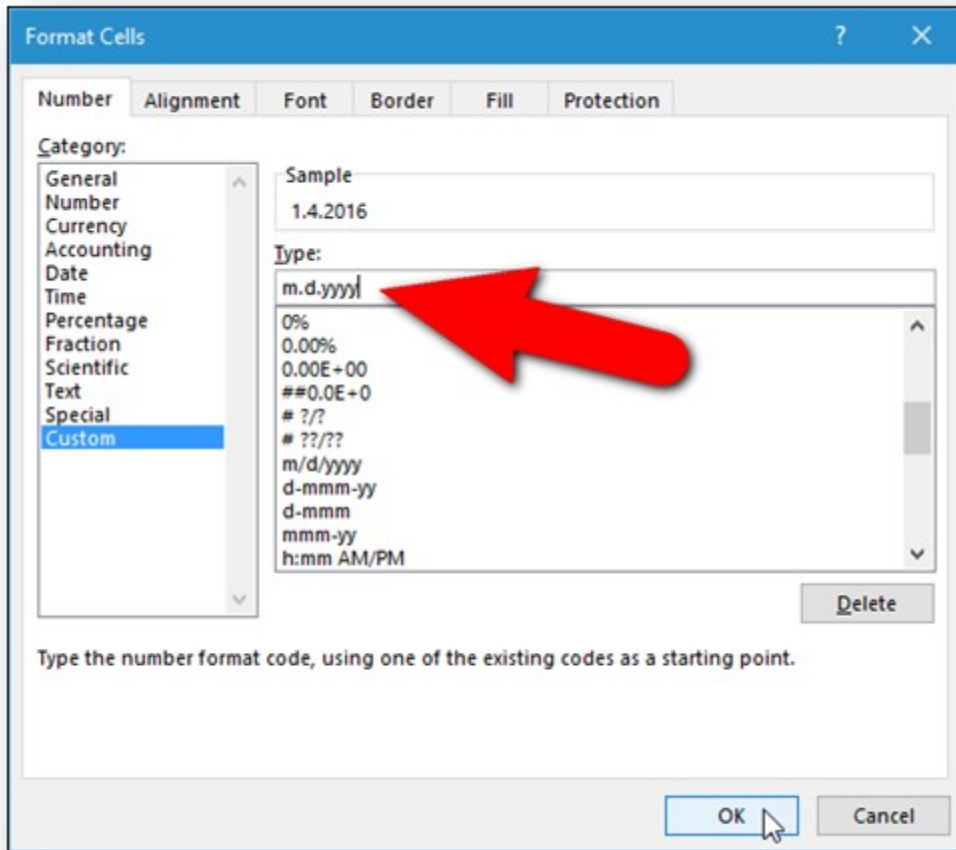


4. On the Format Cells dialog box, make sure the “Number” tab is active.
5. Select “Custom” in the Category list box.

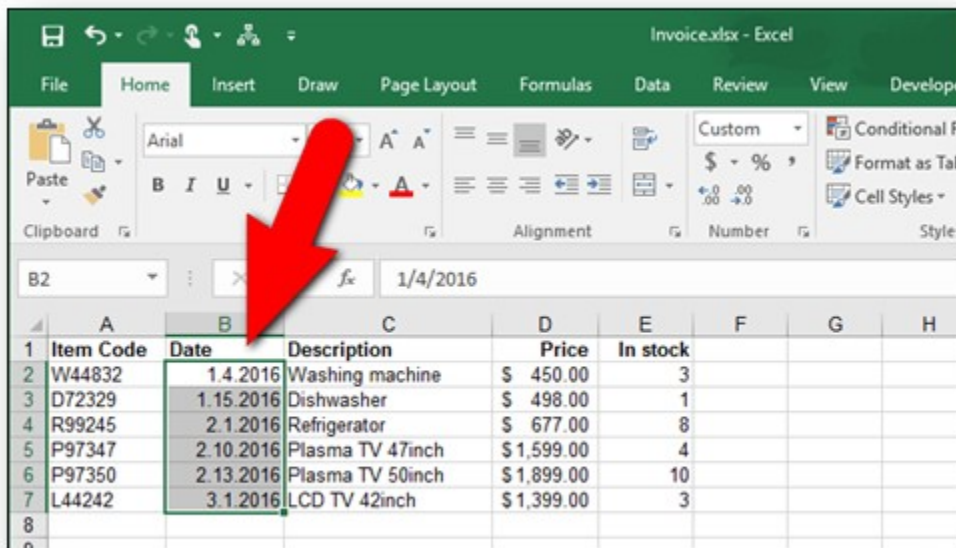


6. Enter “m.d.yyyy” (without the quotes) in the “Type” edit box.
7. Click “OK.”
8. To use a two-digit year in the dates, enter “m.d.yy.”

9. Entering “mm.dd.yyyy” inserts a leading zero before single digit months and days and uses a four-digit date (01.04.2016).



The dates now use periods instead of slashes.



You can change the date format back to slashes or to any other date format, such as a long date or a date and time combination, using the same procedure. Just select “Date” in the Category list on the Format Cells dialog box and select a format in the “Type” list box.

Cranial Candy: Word Of The Week...



nidus

PRONUNCIATION:

NIDE us

MEANING:

Literally, a nidus is a nest (or a cluster of eggs).

Figuratively, the nidus of something is its source: the place where that thing is fostered.

PART OF SPEECH:

Countable noun.

(Countable nouns, like "bottle," "piece," and "decision," are words for things that can be broken into exact units.

USAGE:

"Niduses" is the plural recognized by the OED; sometimes you will see "nidi" as the plural.

When you talk about the nidus **of** something (or a nidus **for** something), you mean its figurative nest: the place where it is nurtured or where it was born (or rather, "hatched!").

That can be a positive thing ("the nidus of technological advancements," "a nidus for youthful curiosity") or a negative thing ("a nidus of sarcasm and hypercriticism," "the nidus for greed").

Although we do not *"repair"* computers, the **S.W.A.T. Team** (Students **Who Assist** [with] Technology) on Level A of Carlson Library is always happy to help. Having an issue? Let us take a *swat* at it!

Something To Think About:



Never doubt that a small group of thoughtful, committed, citizens can change the world. Indeed, it is the only thing that ever has.

~- Margaret Mead