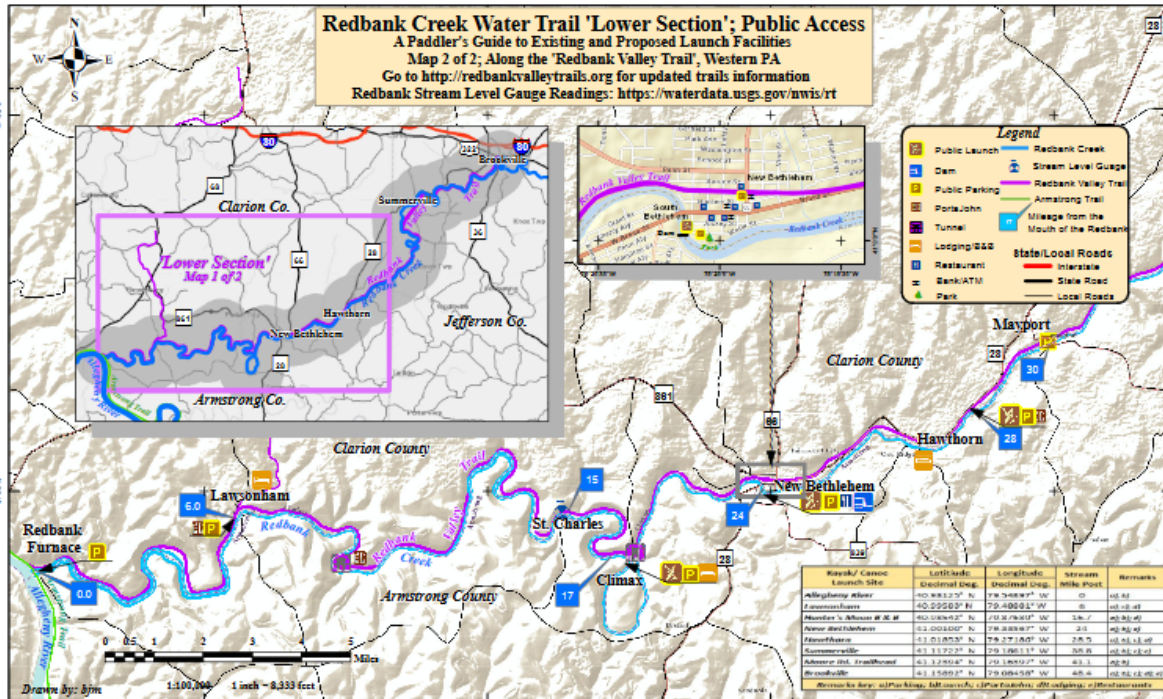
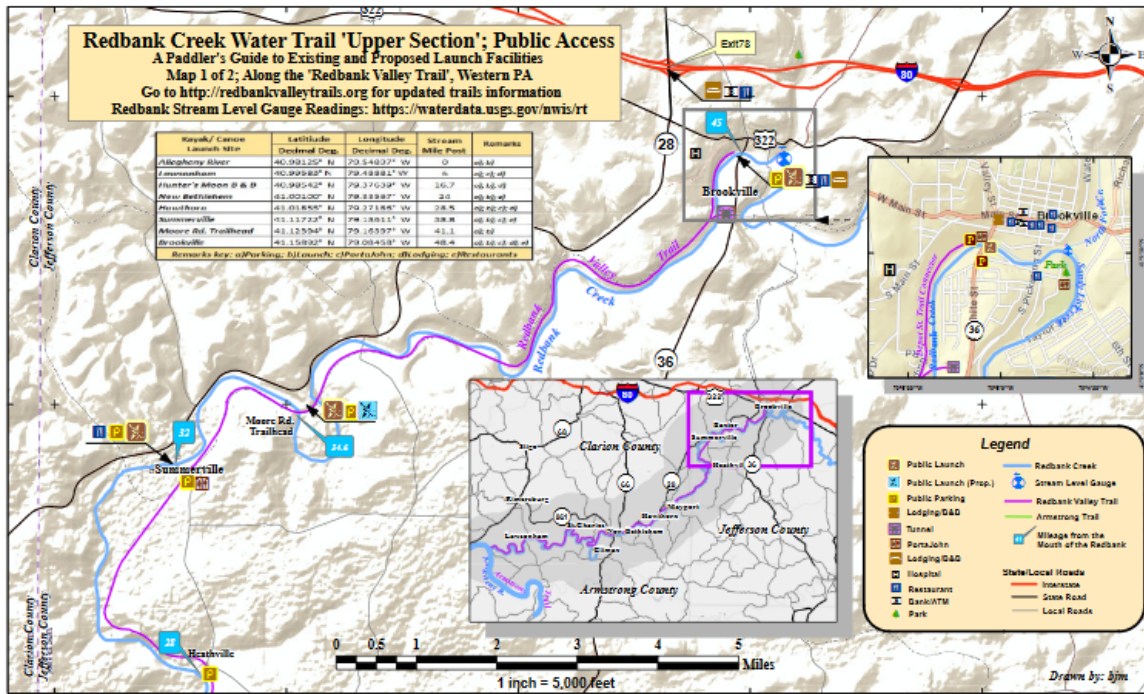


Redbank Valley Trail

The Redbank Valley Trail is a local 51-mile non-motorized, four-season trail which was originally used for railroad travel. It is popular for walking and biking. It was recognized by DCNR in 2014 as the first Trail of the Year. It is located in Jefferson, Clarion, and Armstrong Counties.

(Most photos are taken between Milemarker 23-26.)





Forty-two miles of the trail parallel the scenic Redbank Creek. Wildlife abounds.



Kayaking is popular on the Creek. There are multiple spots to access the Creek directly from the trail.



The view of the Creek from the trail at Fishbasket is one of the nicest. Fishbasket is located at the crossing of Route 28 heading near Alcola/Hawthorn (near Milemarker 23). For historical information related to Fishbasket visit <https://explorepahistory.com/hmarker.php?markerId=1-A-203>.



This portion of the trail also parallels the United Valley Soccer Fields, once the site of Hawthorn Pottery. For more information, check out this article detailing the Pottery's history <https://www.hawthornboro.org/pottery-company/>.



Redbank Valley Trail connects to Armstrong Trail and from there continues to the Erie - Pittsburgh Trail Alliances, the Great Allegheny Passage to DC and eventually Rockwood to the 0-11 Memorial Trail when completed. There is also an initiative to use the Redbank Valley Trails to connect to Ridgeway.

The trail travels along the Creek until it converges with the Allegheny River at mile marker zero. It travels north through New Bethlehem, Clarion County at marker 20, into Jefferson County at marker 27.8, into Summerville and continues to the Rose Siding Bridge. There is currently a gap at mile 19 due to flooding on July 19, 2019 where a fifteen-foot stone arch bridge was washed out. A 3.3 mile detour on local roads is available.

